

## Make it a Wellness Xmas

The Eminence Stone Crop Gift Set is a fabulous introduction to this legendary collection with three popular products in a 100% organic cotton bag with recycled linen lining. The Biodynamic Collection of hypoallergenic and clinically-tested, active, earth friendly skin care has been so well received that Eminence have created a travel sized gift set for the Christmas rush! This gift box includes all 9 Biodynamic products. Contact 1800 142 182, [www.eminenceorganics.com.au](http://www.eminenceorganics.com.au).



## SUNCARE

### FROM THE SEA

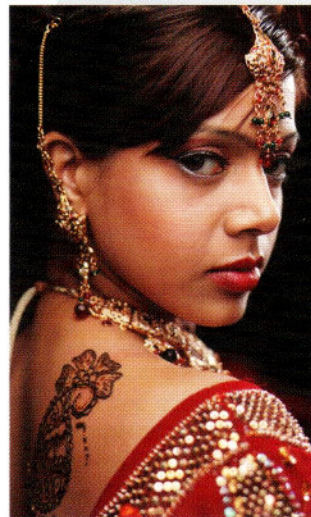
AHAVA's Mineral Suncare™ with sunscreens and special ingredients native to the Dead Sea region is a shielding complex that reduces UVA+UVB damage, fights sun-ageing, and generously hydrates sun-exposed skin. Absorbing more than 90% of UVA rays (according to Australian standards), Mineral Suncare™ is paraben, oxybenzone, and mineral oil free, suitable for children, approved for sensitive skin, allergy tested and not tested on animals. Call 1800 824 282.



## Luscious Lashes Soy-Naturally

Emani Soy Mascara is a unique and exceptional new product, completely free from fragrance, talc, parabens, fillers and petroleum/mineral oils. Emani Soy Mascara is vegan friendly and infused

with organic soy extract to strengthen, nourish and repair lashes with organic jojoba oil to recondition hair follicles. It lengthens and defines beautifully, is easily removed with facial cleanser or soap and is long lasting. No more itching or allergic reactions! Contact 03 9421 1911 [www.emani.com.au](http://www.emani.com.au)



## Natural Henna Back in Vogue

The use of Henna is back in style! This natural dye cleanses, nourishes, strengthens and covers the grey, whilst imparting glorious colour and shine on all hair types. OmVeda's new Henna Hair Colour Powders include shades of Brown, Burgundy, Wine Red, Black, Mahogany and Natural. The henna powders are combined with specific herb combinations such as Indigofera Tinctoria (indigo), Bhringraj (eclipta alba), Centella Asiatica (brahmi), Red Kaolinite or Red Clay. Contact OmVeda on 1 300 622 383, [www.omveda.com](http://www.omveda.com).